

KOOKY KONGA

OPERATING MANUAL ***(“CEC” ONLY)***

REVISION: 1 FEBRUARY 2002
(SOFTWARE: KKONGA.US1 031000)

COASTAL AMUSEMENTS, INC.
1935 SWARTHMORE AVE.
LAKEWOOD, NJ 08701
TEL: 1-732-905-6662 FAX: 1-732-905-6815
E-MAIL: SALES@COASTALAMUSEMENTS.COM

GAMES DESCRIPTION

Kooky Konga is a one (1) player children’s skill game where the player must guide a ball through increasingly difficult levels in an effort to score as high as possible. The maximum score is reached by guiding the ball to the top level of the game.

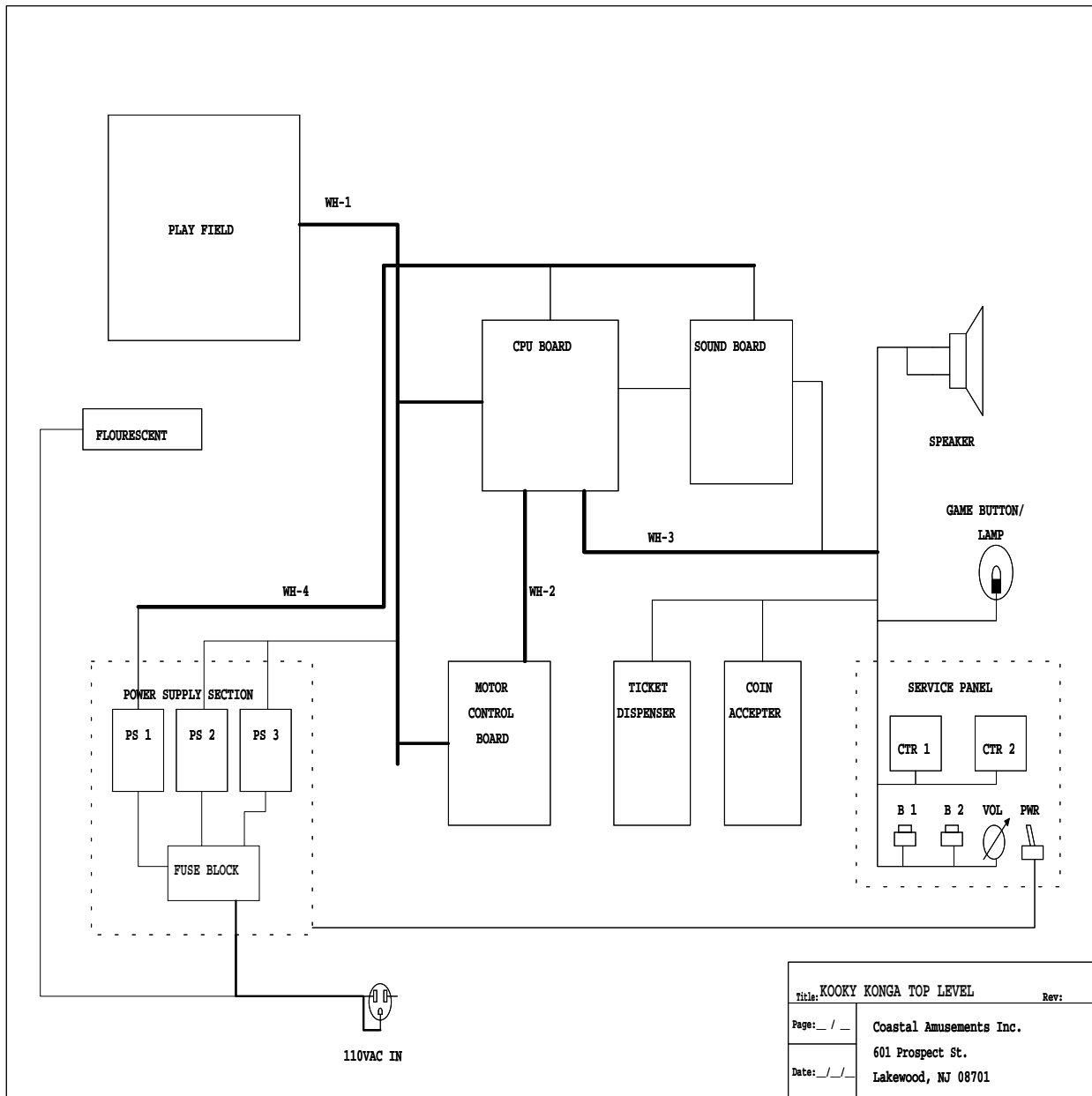
In order to successfully complete each level of play, the player must guide the ball into the appropriate holes in the wheel, while avoiding the “loser” holes. The “winning” holes will advance the ball to the next level, while the “losing” holes will send the ball back to the start position.

Listed below is important technical information and game settings for the operation of *Kooky Konga*.

Kooky Konga Dip Switch Settings

Dip Switch	1	2	3	4		
Diagnostic Mode	On					
Coins Per Play						
1 Coin		Off				
2 Coins		On				
Pay Table						Award
1 Pay			Off	Off		1,2,3,4,8
2 Pay			Off	On		2,3,4,5,10
3 Pay			On	Off		4,4,4,4,4
1 Pay			On	On		1,2,3,4,8

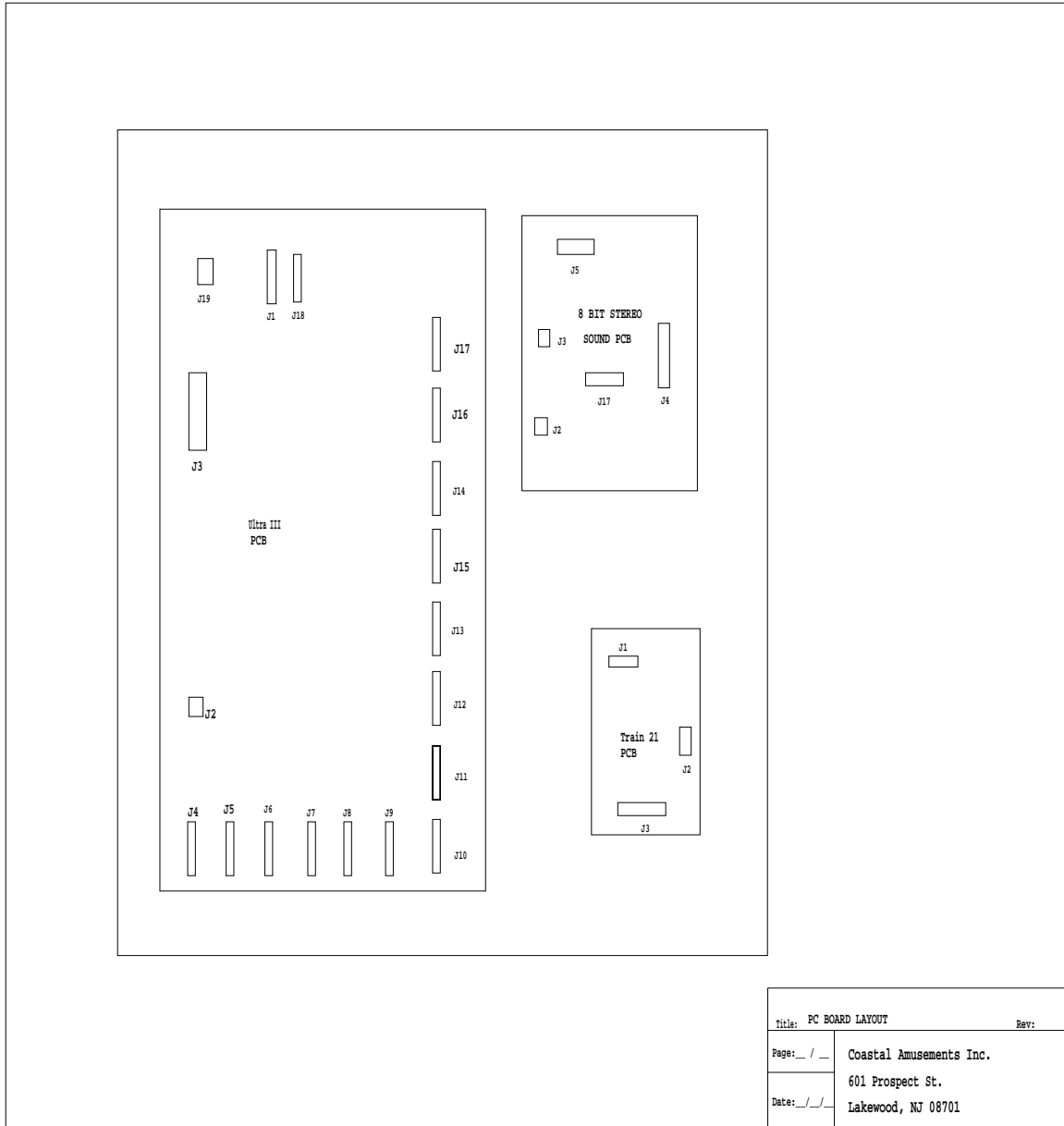
Kooky Konga Schematics



Title: KOOKY KONGA TOP LEVEL		Rev:
Page: _ / _	Coastal Amusements Inc.	
Date: _ / _ / _	601 Prospect St.	
	Lakewood, NJ 08701	

Top Level

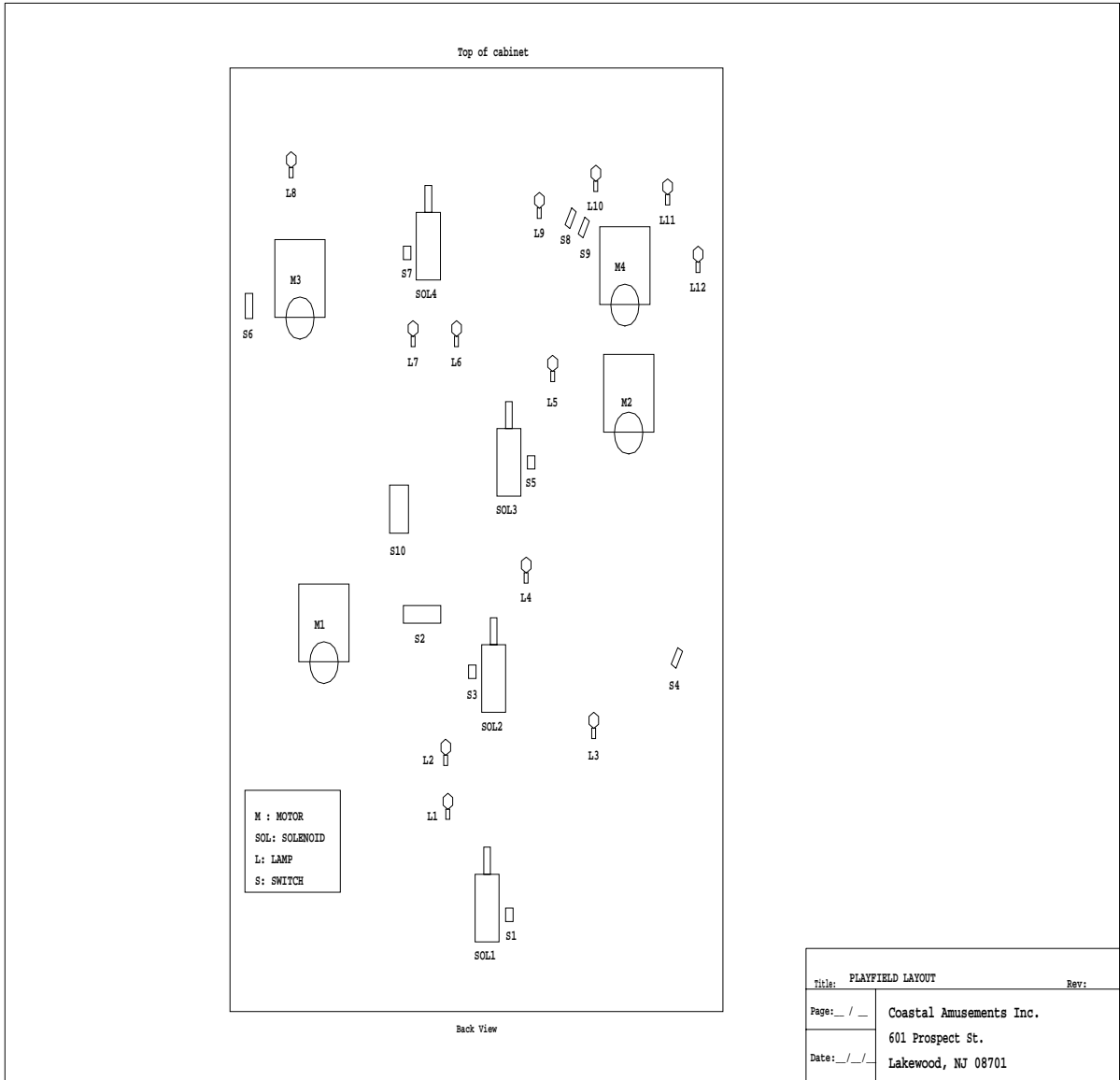
Kooky Konga Schematics Cont'd



Title: PC BOARD LAYOUT	Rev:
Page: _ / _	Coastal Amusements Inc.
Date: _/ _/ _	601 Prospect St.
	Lakewood, NJ 08701

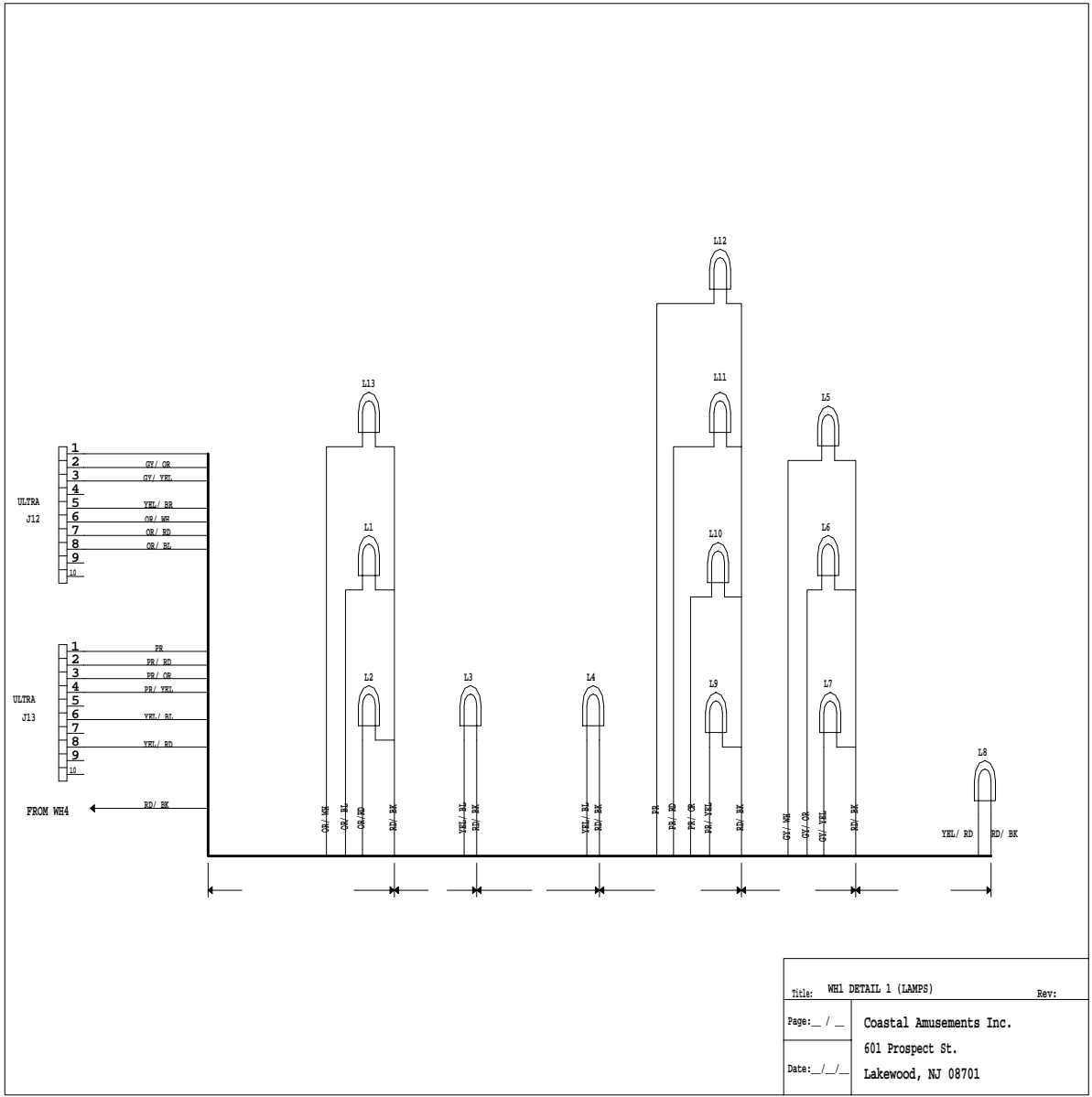
PCB Layout

Kooky Konga Schematics Cont'd



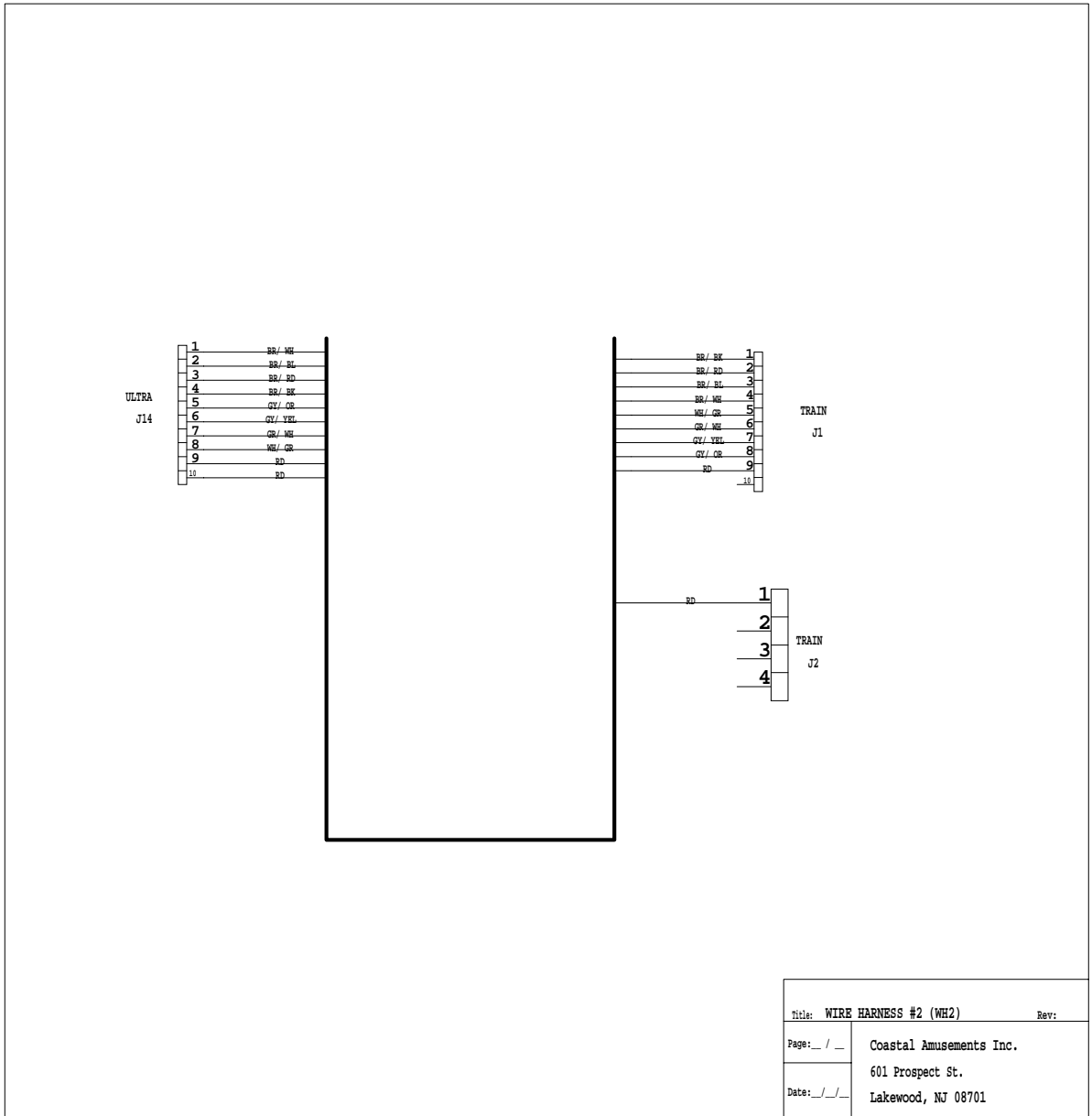
Platfield Layout

Kooky Konga Schematics Cont'd



WH1 Detail 1

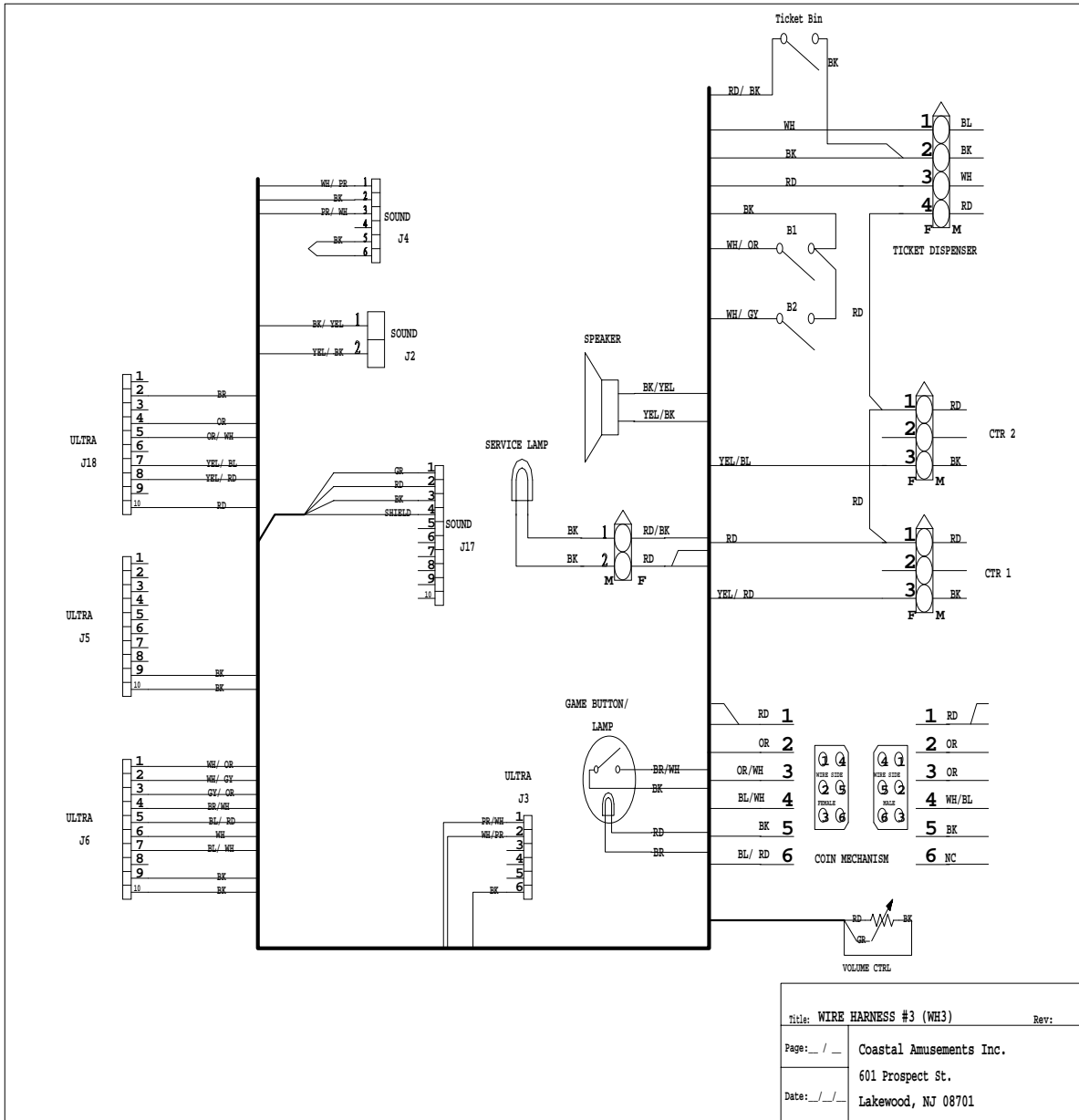
Kooky Konga Schematics Cont'd



WH 2

Title: WIRE HARNESS #2 (WH2)		Rev:
Page: _ / _	Coastal Amusements Inc.	
Date: _ / _ / _	601 Prospect St.	
	Lakewood, NJ 08701	

Kooky Konga Schematics Cont'd



WH 3

